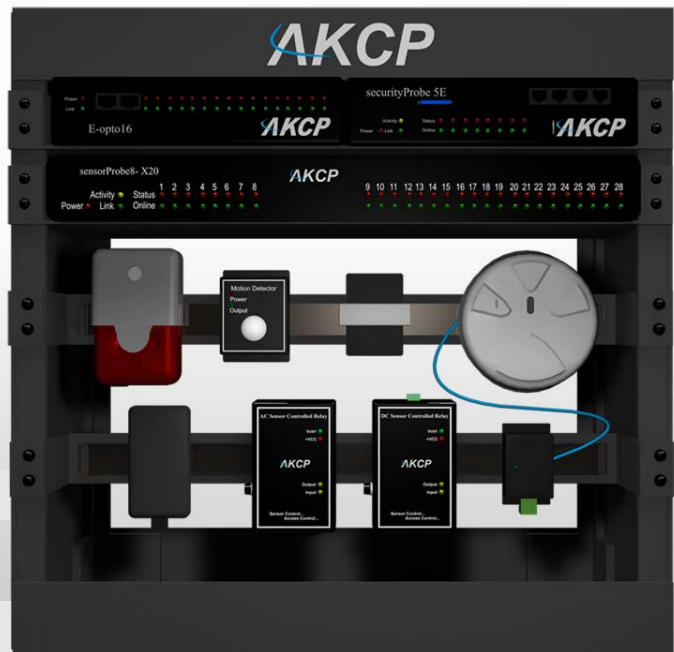
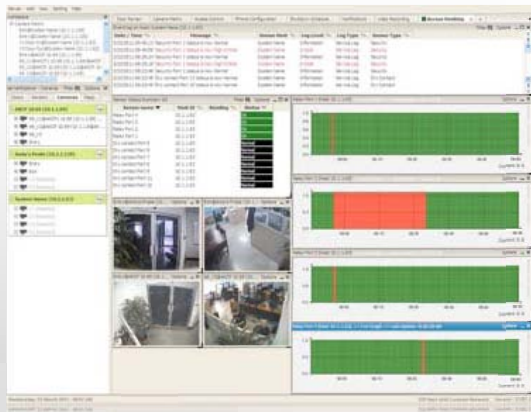


Security Demo Kit



AKCess Pro have created the Security Demo Kit, ideal for showcasing typical customer installations. Each Demo Kit is presented in an attractive custom made metal case and is portable for ease of use either in your own premises or on location for customer presentations or exhibition attendance.

The Demo Kit comes in a 'flat pack' arrangement with sensors pre-mounted onto DIN rails, you only need to bolt the Rack together and connect all the units and sensors. Ideal for showing the security monitoring capabilities of the AKCess Pro product range this demo kit includes base units and the most popular security related sensors.

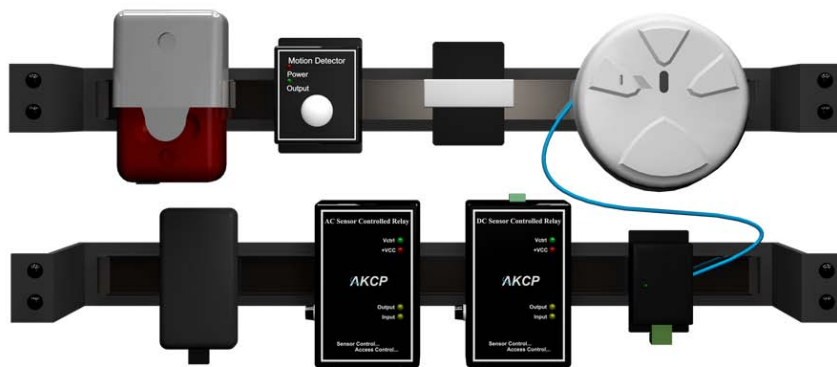


This kit includes the following base units and expansion boards:

- securityProbe 5E AND E-Opto16
- sensorProbe8-X20

In addition there are a variety of intelligent sensors supplied, conveniently pre-mounted on DIN rails:

- Siren and Strobe Light AND motion detector AND vibration detector AND smoke detector
- AC Sensor Controlled Relay AND DC Sensor Controlled Relay AND security sensor AND Universal Mount Digital Camera



The Security Demo Kit includes the following products: securityProbe 5E (includes temperature/humidity sensor)

The securityProbe 5E has a Linux Operating System running with 520MHz CPU, 8 Megabytes of Flash memory and 128 Megabytes of SDRAM. An additional 2 Gigabytes SD card is installed to provide greater storage capacity. It is TCP / IP compliant and runs lightweight web server including https (SSL), Bash, Perl, Telnet, PHP, Email and Nagios.



securityProbe 5E

The securityProbe 5E has an easy-to-use web-based user interface for sensor configuration, data collection and extensive graphing. Complete SNMP functions such including SNMP v3 encryption are supported. Up to 4 remote controlled pan-and-tilt cameras, combined with the securityProbe 5E's motion detection and event notification system, can keep you up to date via email, SMS, telephone call, web-browser and other channels.

- Full SNMP v3 compliance
- 8 Intelligent sensor ports
- Supports up to 4 external digital cameras
- Compatible with all of AKCess Pro's intelligent sensors
- Modbus Master/Slave function
- Extendable functionality using the E-sensor8, E-opto16 or Door Control Unit
- Internal web server including https (SSL), Bash, Perl, Telnet, PHP and Nagios support

Expansion Units (for use with securityProbe 5E only)

AKCess Pro Expansion Units are designed to enhance the capabilities of the securityProbe 5E by adding additional opto-isolated dry contacts or additional RJ45 Sensor Ports so a wide variety of equipment can be monitored.

E-Opto16 (E-OPTO16)

Allows for an additional 16 opto isolated dry contact inputs.



sensorProbe8-X20 (SP8-X20)

A sensorProbe8 married with the 20 Dry Contact System. The sensorProbe8-X20 system enables connection and monitoring of devices like HVAC Systems, Security Equipment, UPS, Generators, Industrial Equipment and much more.



- Fully embedded TCP/IP and web-server.
- Built-in notification features - Email and SNMP traps.
- 8 auto-sense ports for connecting any AKCess Pro sensors.
- additional 20x 2-wire dry contact ports are provided giving a total of up to 28 dry contact ports
- A new improved web-based interface for easy configuration and monitoring.
- Continuous time feature on every sensor port to eliminate false warning alerts.
- Login for User and Administrator for better security.

Siren and Strobe Light (STR00)

The combined audio siren and visual strobe light alarm indicates a clear alert of an alarm condition. Powered by the base unit the siren and strobe can be triggered by another sensors status, or controlled manually via the web interface or using its own SNMP OID.



PIR Hardware Motion Detector (MD00)

Designed to allow for mounting in either ceilings or walls to give the optimum detection angle, preventing false alarms.

- 60° detection angle
- High RFI immunity
- Powered by base unit, no additional power required
- Up to 10 Motion Detector Sensors on a single port



vibrationDetect Sensor (VDS)

The vibrationDetect Sensor is a normally closed input switch that will detect when there is vibration, or a window is broken. It will initiate an alarm when a vibration from a non-desirable force strikes the protected surface.



Smoke Detector (SK00)

AKCess Pro sensorProbe can now be integrated with Smoke detectors. An important addition to security and safety. These smoke detectors are easy to install and configure. No additional power (battery) is required.



Sensor Controlled Relay (PRB-AC)

The Sensor Controlled Relay can control the electrical power to devices managed over the Internet.



Sensor Controlled Relay (PRB-DC)

The Sensor Controlled Relay can control the electrical power to devices managed over the Internet.



Security Sensor (SS15)

The Security Sensor is a magnetic on/off switch for monitoring doors and windows. When the door, or window, opens the input signal. Alerts can then be generated to notifications.



Universal Mount Digital Camera (UMDC)

The Universal Mount Digital Camera (UMDC) is an important part of any security system and connects straight into the securityProbe 5E. It has IR night vision capability and delivers between 15fps and 30fps depending on the resolution selected. Perfect for recording and playback of video footage as well as capturing still images in universal JPG digital format.



Security Demo Kit (DR-S)

Model Name	Product Code	Price (USD)
Single 1U Din Rail Rack Mount Kit for Sensors	DR1U	\$125.00
Double Rack Mount Kit for securityProbe plus Expansion Unit	DN1U	\$250.00
securityProbe 5E includes rack mount brackets, a single port temperature and humidity with free 5 feet cable (THS00)	SEC-5E (incl. THS00)	\$1,395.00
E-Opto16	E-Opto16	\$300.00
sensorProbe8-X20	SP8-X20	\$900.00
Siren Strobe Light	STR00	\$125.00
PIR Hardware Motion Detector	MD00	\$125.00
vibrationDetect Sensor	IVDS	\$75.00
Smoke Detector	SK00	\$125.00
AC-Sensor Controlled Relay	PRB-AC	\$125.00
DC-Sensor Controlled Relay	PRB-DC	\$125.00
Security Sensor	SS-15	\$75.00
Universal Mount Digital Camera	UMC	\$159.00
AKCP Branded Demo Rack Kit Assembly	AKCP Rack	\$250.00
AKCess Pro Server Demo	AKCPSERVER	Demo
Note: Special Dealer Discounts apply to this Item. Contact our Sales Team for more information.		